

MONTHLY MEMBERSHIP PROGRESS REPORT

LOCATION TEXAS

District 2 A1

Results as of: 4/30/2023

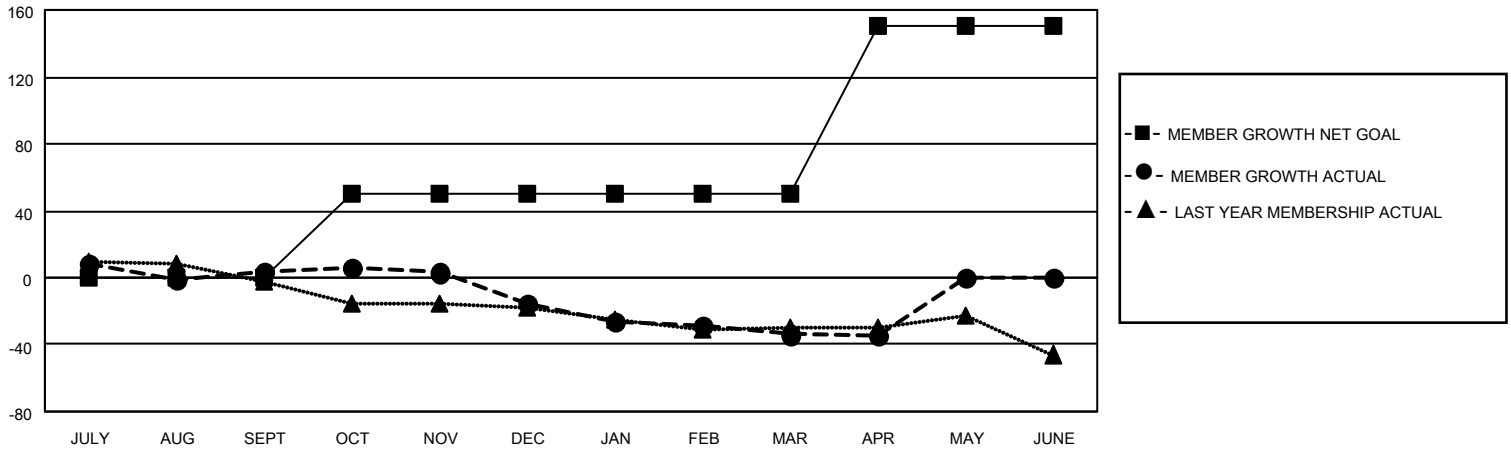
Clubs			
RESULTS FOR 2022-2023			
QUARTER	NEW CLUB GOAL	NEW CLUBS	DROPPED CLUBS
JULY/AUG/SEPT	0	0	0
OCT/NOV/DEC	1	0	1
JAN/FEB/MAR	0	0	0
APR/MAY/JUNE	1	0	0

Members			
RESULTS FOR 2022-2023			
QUARTER	MEMBER GROWTH NET GOAL	MEMBER GROWTH ACTUAL	DROPPED MEMBERS ACTUAL (including transfers)
JULY/AUG/SEPT	0	42	33
OCT/NOV/DEC	50	27	47
JAN/FEB/MAR	0	13	31
APR/MAY/JUNE	100	6	7

GOALS AND ACTUAL NEW CLUBS CUMULATIVE



GOALS AND ACTUAL MEMBERS CUMULATIVE



DROPPED CLUBS: 1

21 CLUBS OF 40 ADDED 1 OR MORE NEW MEMBERS

GENDER DISTRIBUTION

MALE	656 (66.13%)
FEMALE	336 (33.87%)
NON BINARY	0 (0.00%)
PREFER NOT TO ANSWER	0 (0.00%)

DROPPED MEMBERS

[CLICK HERE FOR CUMULATIVE MEMBERSHIP DATA](#)

DECEASED	11
CLUB CANCELLED	15
OTHER	92
TOTAL	118

TOTAL FAMILY UNIT MEMBERS	114
FAMILY MEMBERS PAYING HALF DUES	58